



tensile fabric architecture

our projects | types of fabric structure | manufacturing details



www.tensarch.com



1 855 899 8290



index | what's inside



Examples of our work

4

Project map

5 - 12

Project examples



Types of fabric structure

13 - 16

Free-span, framed & cantilever

17 - 18

Hypod, Hypar & Cyclone units



How our products are made

19 - 20

Fabric, corners, posts & hardware

fabric structures | why we do

After the trip of a lifetime in the late 1990s to Australia, the birthplace of tensile fabric architecture, the residential branch of our business, Shade Sails Canada was set up in 2000, becoming the first company in Canada to offer both residential-style shade sails and full-scale fabric structures catering to a wide range of commercial applications including national parks, nursing homes, schools, amusement parks, restaurants and many more. After close to two decades of business, the growing popularity of the fabric structure industry coupled with an increasing awareness about the importance of sun safety, with the Melanoma Network being formed in 2009, TensArch was established to cater specifically to the commercial sector, working with architects, engineers and businesses of many kinds all over Canada and into the US.

As one of the leaders in the industry in Canada over the last two decades we have gained an unrivalled knowledge of materials and construction and an unparalleled level of experience and professionalism. All of our sails are handmade in our family run facility right here in Canada and we work closely with steel fabricators and local contractors all across Canada to ensure our products are of optimum quality. Our passion for both functional shade and tensile architecture, our experience in the industry and our uncompromising approach to material selection enable us to offer truly unique fabric structures while ensuring the highest quality. We take great pride in our process from start to finish and our intimate one-on-one approach to customer service.



Protection

The fabric we use as standard offers up to 90% UV protection. We offer a variety of other materials including waterproof fabrics which offer a higher sun block rating.



Experience

With two decades under our belts we offer not only the highest quality products on the market but also the ability to assess which materials and design is perfect for you.



Rejuvenation

Our fabric structures are often used by municipalities and companies across Canada to transform areas unusable due to extreme heat into uplifting and inspiring spaces.



Brydon Roe | CEO



brydon@tensarch.com



www.tensarch.com

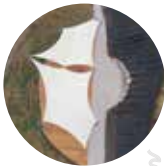


1 855 899 8290



projects | where you'll see our work

Below you will find a small selection of the companies we have worked with and where you can find more information about the project in this brochure or on our website.



Predator Ridge Golf Course
Vernon, BC

🔍 Project details on pg 8



West Point Grey Academy
Vancouver, BC

🔍 Project details on pg 11

📄 Project write up online



UBC Daycare
Kelowna, BC

🔍 Project details on pg 6



Kelowna International Airport
Kelowna, BC

📄 Project write up online

Banff Gondola
Banff, AB

O2's Taphouse & Grill
Edmonton, AB

Tyrell Museum
Drumheller, AB

City of Swift Current
Swift Current, SK



City of Fort Macleod
Fort Macleod, AB

🔍 Framed structure on pg 15

📄 Project write up online

Centre 10
Downtown Calgary, AB



Junction 9 Yoga Studio
Calgary, AB

📄 Project write up online

City of Calgary
St. Patricks Island, Calgary, AB



Jack Asters Restaurant
Toronto, ON

🔍 Project details on pg 7



Metro Toronto Convention Centre
Toronto, ON

🔍 Project details on pg 12



Blue Mountain Resort
The Blue Mountains, ON

📄 Project write up online



City of Collingwood
Collingwood, ON

🔍 Structure on pg 19

African Lion Safari
Cambridge, ON



City of LaSalle
La Salle, ON

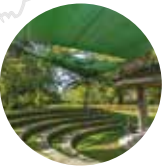
🔍 Main photo on front cover

📄 Project write up online



Valleyview Care Home
North York, Toronto, ON

🔍 Project details on pg 10



Toronto Island Amphitheatre
Toronto, ON

🔍 Free-span structure on pg 2



St Stephens Community House
Toronto, ON

🔍 Project details on pg 9

City of Sudbury
Sudbury, ON

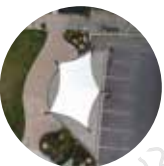
Toronto Zoo
Toronto, ON

Toronto International Airport
Toronto, ON



Niagara Falls Zip Line
Niagara Falls, ON

📄 Project write up online



City of Port Dover
Port Dover, ON

🔍 Project details on pg 5

📄 Project write up online



Parks Canada
Point Pelee National Park, ON

🔍 Free-span structure on pg 11

📄 Project write up online

- 📄 Full project write up available on our website
- 🔍 Information on this project within this brochure
- 📷 Photos of this project within this brochure



city of port dover | port dover, ontario

The fabric structure pictured above was part of a rejuvenation project for the city of Port Dover. We used a waterproof fabric to provide protection well into the shoulder seasons for bands and other acts performing in front of the beautiful harbour museum.



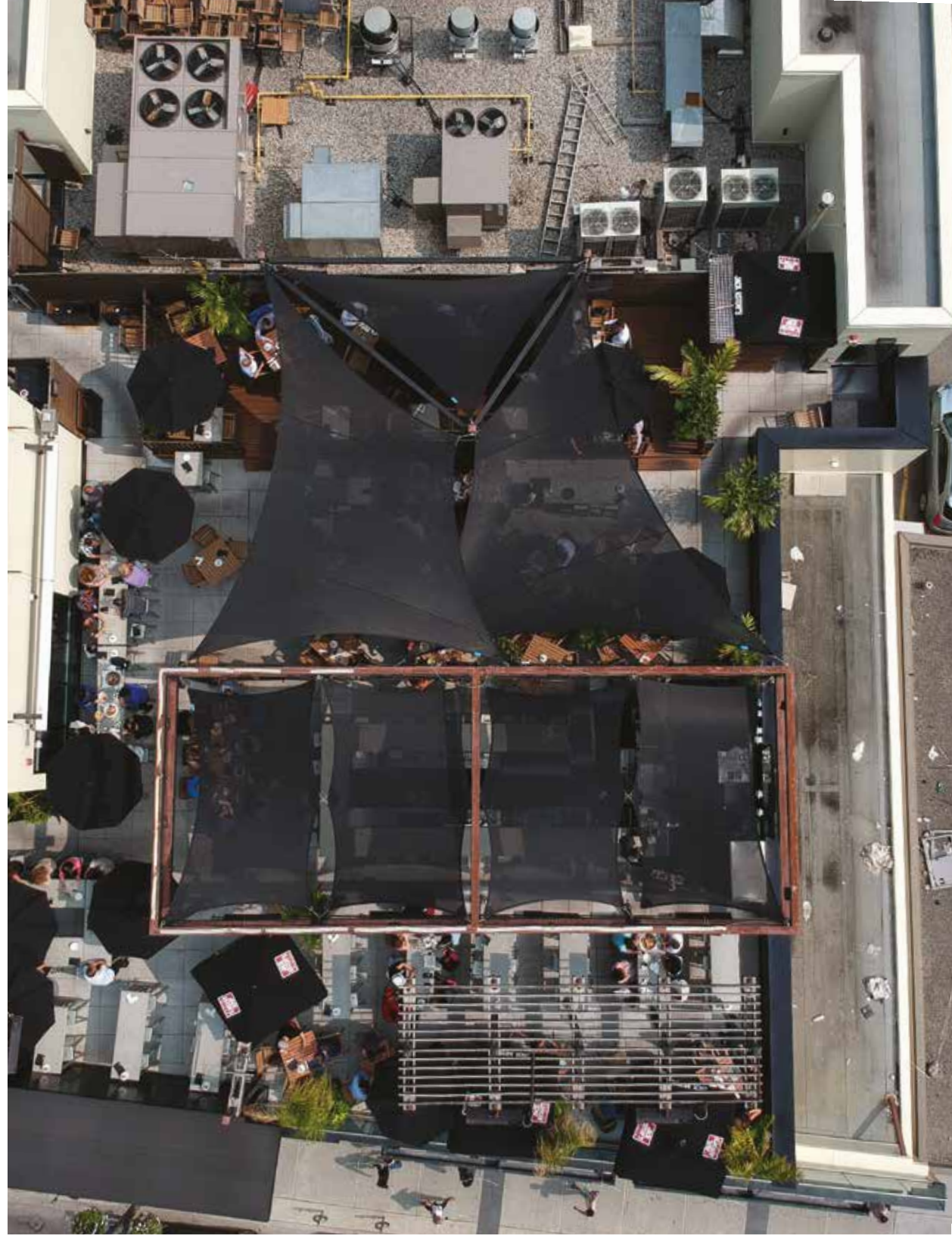
ubc daycare | kelowna, british columbia

A very common use for our shade structures is covering play areas where children spend prolonged periods of time outside. Our manufacturing team included something extra special for the kids at the University of British Columbia Daycare; sewing several fabric butterflies onto the shade sail.

jack astors

downtown toronto
ontario

A fabric structure using multiple free-span shade sails was used at Jack Astors to provide shade for their revitalized rooftop patio. Shade was an important consideration to ensure the comfort and safety of patrons and staff in the summer sun. The restaurant owner now enjoys increased revenue due to this popular shaded space on a hot sunny day.





predator ridge golf course

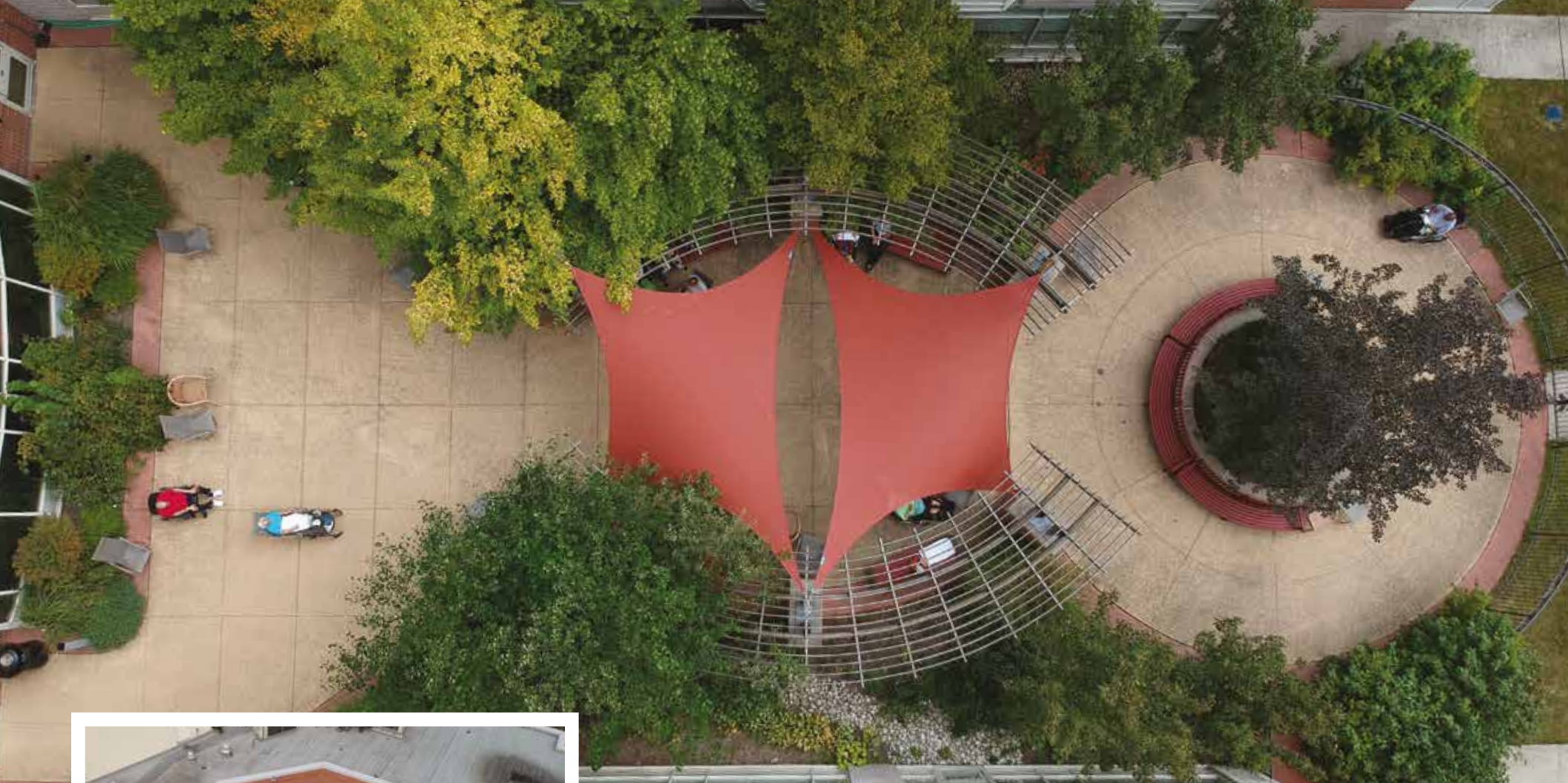
—
vernon
british columbia

The Okanagan is one of the hottest summer destinations in Canada and home to many spectacular golf courses. Predator Ridge used a fabric structure to provide shade over their seating area, which looks out over the golf course and the sprawling hills of the Okanagan.



st stephen's community house | toronto, ontario

A single sail with uniquely designed custom posts was used for the front of the building at St Stephen's Community House to create a visually appealing entrance way and provide shade for those using the ramp up to the entrance.



valleyview care home | toronto, ontario

Another common use for our sails is covering outdoor areas in care homes. Multiple shade structures we used in Valleyview to provide protection for those enjoying the sun in the summer. Varying heights were used in the courtyard to create a visually stunning structure.



west point grey academy

vancouver
british columbia

West Point Grey Academy is an exclusive private school in an scenic area of Vancouver, a short walk from the University of British Columbia. The use of a single sail was implemented to offer maximum coverage, providing the most amount sun and weather protection for the children at play.

metro toronto convention centre

toronto
ontario

Opened in 1984 by Her Majesty Queen Elizabeth II, the Metro Toronto Convention Centre is arguably the leading Convention Centre in North America. Multiple sails were fitted with custom attachments to provide shade for their outdoor seating area on the 2nd floor.



free-span fabric structures



Our speciality and our passion, free-span shade sails are created by spanning tensioned fabric between perimeter posts. Varying the height of the posts aids with weather resistance and creates an aesthetically pleasing space.

Support posts for free-span structures are placed out of the work or play area and offer maximum shade by spanning the fabric over the area. Due to the engineering requirements of a free-span shade sail, you will need room for extensive footings, specified by our engineer. We work closely with engineers on each project to ensure each structure requires little to no maintenance and is built to withstand almost all wind and weather conditions including winter conditions if required.

Free-span fabric structures are our most popular type of shade solution and for good reason; they look fantastic and provide large amounts of shade without obstructing your outdoor space.



monotec 370 fabric

At TensArch we only use the highest quality cloth to ensure maximum amounts of UV protection and to ensure the life of your fabric structures. On most structures, we use Monotec 370 a high-grade monofilament cloth with 15-year UV warranty.



marine-grade hardware

All of our hardware is marine-grade rated steel, used on super yachts the world over, ensuring the highest possible quality and durability, maximizing the life of your structure. Similar to our posts, our engineer rates all of our hardware specifically for each project.





framed fabric structure

Framed shade structures can be used in many settings to create an unobtrusive shade solution where there are restrictive footing options. Typically requiring much less extensive footings than a free span structure, framed structures support the tensioned fabric by bracing each post and dispersing the load placed on each footing. Framed structures are also engineered specifically to withstand almost all wind and weather conditions



cantilever fabric structure

Cantilever structures offer the benefits of a framed structure with the ability to place the footings out of the work or play area by cantilevering the fabric over the space.



cyclone umbrellas

Our Cyclone umbrellas offer a more traditional shape and are used frequently in playgrounds, restaurants and many other applications. These units provide maximum amounts of shade while offering all weather capability.



hypar shade kit

The Hypar kit bridges the gap between our large-scale free-span structures and our Hypod units. This framed structure also produces a hyperbolic shape with varying post heights and, unlike larger structures, needs much less extensive footings. These kits can be installed by TensArch or shipped as a kit directly to your location to be installed by your staff or local contractors.



hypod shade unit

The Hypod shade unit spans fabric between four points, creating a hyperbolic shape from a single post. They can be permanently mounted if required, but they also offer the flexibility of movability to best suit your desired shade zone. These structures are perfect for events or multiple areas with the requirement for shade at different times of the day.



fabric & corner construction

A TensArch fabric structure is built to last; all of our sails are handmade in Canada using only the highest quality materials and construction methods.

monotec 370

To achieve the highest levels of quality, we import Monotec fabric from the birth place of tensile architecture, Australia. Monotec 370 comes as standard with most TensArch structures and is widely regarded in the industry as the best shade cloth in the business with an unrivalled 15-year UV warranty.



- 100% round monofilament yarn with no tape or oval yarn filler
- Market leader in bursting and tensile strength testing worldwide
- Strong wind resistance, high performance in tough conditions
- Dirt and debris resistant, Monotec 370 is maintenance free

corner quality

316 Rated Steel Cable - As with all of our hardware, all cables are made of marine-grade stainless steel.

UV-Rated Thread - Cheaper thread deteriorates in the sun. TensArch only uses high-quality thread for longevity and safety.

Double Stitched Triple Layered Fabric - Another measure we take to ensure the life of our shade structures is the integrity of the corner construction.

waterproof options

There are also other types of fabric we can suggest depending on requirements of your fabric structure. Dri-Z is a strong lightweight small-span fabric for smaller seasonal structures. Ferrari 502/802 or Mehler are fabrics that we can engineer for large span and all season applications. These fabrics feature full waterproof coverage as well as the highest levels of UV block and also come in a wide range of colours.

posts, attachments & hardware

The posts are also a critical part of any shade structure; without proper engineered footings and posts, you cannot tension the fabric to the required specifications for safety. We engineer all of our installations considering local building codes and wind ratings to ensure longevity in your investment and the highest level of safety.



custom attachments

TensArch can design and fabricate custom attachment points/brackets for almost any existing building or structure. We work closely with our engineer to ensure each attachment will handle the required loads for each sail design.



marine-grade hardware

We use only the highest quality load-rated 316 stainless steel on all of our projects. This not only provides the highest level of safety and longevity, but also ensures your shade structure maintains its high-quality look without the rusting and level of deterioration associated with poor quality metals.



Our service starts by guiding you through the different options for your space and helping you select a design that works both functionally and aesthetically. We work closely with engineers and architects to create a solution that is rated specifically for your location and is fabricated and installed meticulously to ensure the highest possible quality. Our service extends well beyond the initial installation, with seasonal maintenance options available year-round and a friendly team ready to answer any questions you may have.



www.tensarch.com



1 855 899 8290



brydon@tensarch.com

